



Investigate an individual's potential for violence and prevent an attack - well before a law is broken and the justice and law enforcement system has the legal standing to take action.

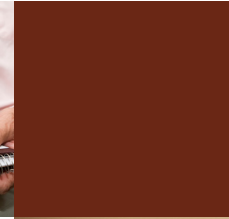
Critical clues and crucial opportunities for intervention can often be detected early in an individual's path toward violence. Yet uncovering this information and developing mitigating strategies require domains of expertise that criminal investigators and traditional law enforcement personnel are not trained to understand or authorized to apply.

Hillard Heintze's acclaimed threat investigators and specialists conduct overt and covert investigations of individuals who may represent a threat to others. The team helps prevent acts of violence using the same protocols established by the U.S. Secret Service to protect the U.S. President and other national and international leaders.



www.hillardheintze.com

THREAT INVESTIGATION SERVICES



- **Prevention of violence even if laws have not been broken**
- **Access to a richer array of countermeasures that provide more sustainable and effective solutions beyond arrest and prosecution**
- **Increased likelihood that subject's family and friends will cooperate with an investigation given the potential opportunity for support and assistance as an alternative to prosecution**
- **Greater insight and ability to corroborate statements through threat investigator's use of non-custodial interviews in the subject's home environment**

SCOPE OF SERVICES

Automated Real-Time, Open-Source Threat Detection and Analysis

Continuous use of the most advanced real-time, open-source data search and mining enterprise technology to find, select, acquire and analyze actionable security intelligence on direct or indirect threats to leaders, employees, assets, operations or reputation.

Threat Investigation

Comprehensive investigation of a subject's life, including both current and past events, to determine if subject poses a current threat. Led by a primary investigator, this highly collaborative effort includes input from law enforcement, mental health and social services, and family, friends, neighbors and coworkers, as applicable.

Mental Health Evaluation

Analysis by a clinical psychologist with decades of experience in support of the U.S. Secret Service and other federal agencies. Contributes vital pieces of the puzzle in determining dangerousness when aligned with facts uncovered in the investigation.

Development of Countermeasures and Mitigation Strategies

Guidance on options to contain a threat, reduce risk and protect individuals in harm's way. Detailed recommendations on various tactics, control measures and security policies and procedures, as well as timing considerations and thresholds for key actions, dependencies and likely results.

Case Management

Execution of approved strategies, including ongoing monitoring of the subject, cultivation of a "circle of observation" around him or her, coordination with critical federal, state and private advisers, and timely communications and reporting.

CLIENTS WHO TURN TO US FOR THREAT INVESTIGATION SERVICES

- Senior Decision Makers and their Management Teams
- Directors of Corporate or Campus Security Departments
- HR Directors
- General Counsel
- State and Local Administrators for Law Enforcement and Other Public Agencies
- Protection Specialists for High-Profile Executives, Elected Officials, Celebrities and their Families

Corporate Headquarters

30 South Wacker Drive
Suite 1730
Chicago, Illinois 60606
(312) 869-8500
www.hillardheintze.com

For more information, contact:

Arnette Heintze, Chief Executive Officer, arnette.heintze@hillardheintze.com
Matthew W. Doherty, Senior Vice President, matthew.doherty@hillardheintze.com